

# Machine Series: SW Eco

Stretch Wrapper / Pallet Wrapper



Pre-stretch function up to 300%  
pre-stretch of stretch films

## Technical Details:

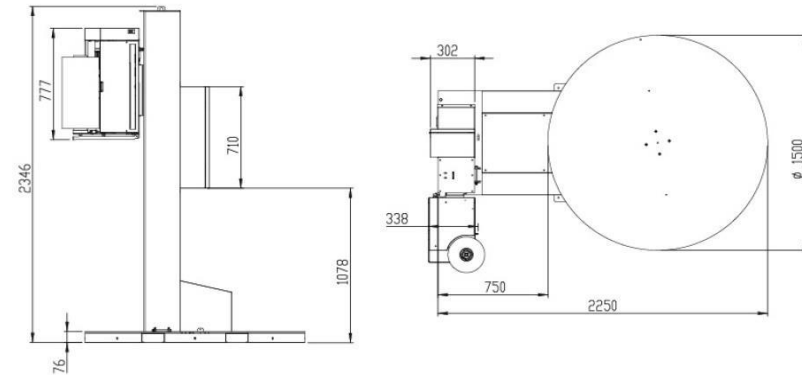
- Clear control panel / touch panel
- Preselectable winding programs: Head and foot windings
- Infinitely adjustable lifting carriage and turntable speed
- Integrated transport recesses
- Automatic height detection by photocells
- Quick change system for the film roll
- Fixed stop of the turntable in starting position

## Additional Options:

- Turntable: Ø 1500 mm or 1650 mm / max. 1650 kg pallet weight
- Maximum pallet height: 2200 mm, 2500 mm, 3000 mm
- Product sensor for black foils
- Drive-on ramp for lift trucks (not for SW-206)
- Drive-on ramp for forklift truck, electric pallet truck



Stretch Film



Machine Dimensions

Eco-Series Models:	SW-200	SW-200PRE	SW-208PRE
Turntable Diameter:	Ø 1500 mm	Ø 1500 mm	Ø 1500 mm
Turntable Speed:	Up to 10 rpm	Up to 12 rpm	Up to 12 rpm
Max. Pallet Height:	2200 mm	2200 mm	2200 mm
Max. Pallet Weight:	1200 kg	1650 kg	1650 kg
Supply Voltage:	230 V 50Hz 1 Phase	230 V 50Hz 1 Phase	230 V 50Hz 1 Phase
Max. Connected Load:	0,8 kW	1,2 kW	1,2 kW
Pre-Selectable Winding Programs:	2	2	3
Control Panel:	Analog	Analog	Analog